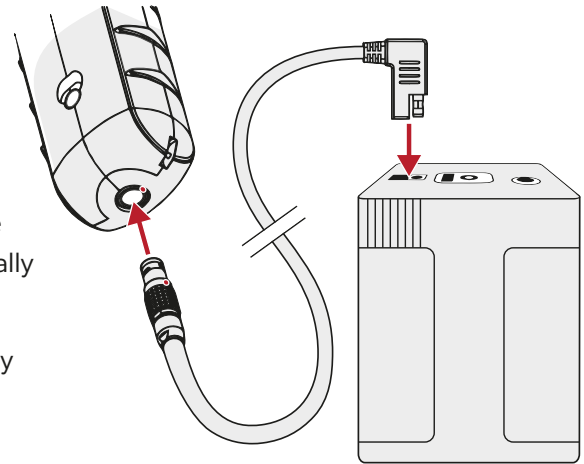


NL CAMERA | GETTING STARTED

1 QUICK START GUIDE

- A** Place the battery into one of the pockets inside the provided carrying bag. Attach the power cable to the battery.
- B** Carefully plug the power cable into the camera – make sure the red orientation marks are aligned. The camera starts automatically when the power is connected. The LED on the side turns red.
- C** To turn off the camera, simply disconnect the power by carefully detaching the plug.

For more information, see the **NL Camera User Manual**.



2 DEVICE SETUP WIZARD

- A** The device setup wizard is run when the device is started for the first time.
- B** The wizard asks for WiFi settings (not supported in all regions), time settings, application mode (not applicable to all versions), and application mode related settings.
- C** In the end, the instructions for registering the device for cloud use (not supported in all regions) are given. Registration can be performed once.

The cloud can be accessed at view.nlacoustics.com.

3 VISIT THE NL ACOUSTICS SUPPORT PORTAL

Please visit support.nlacoustics.com for more information, such as how to use videos.